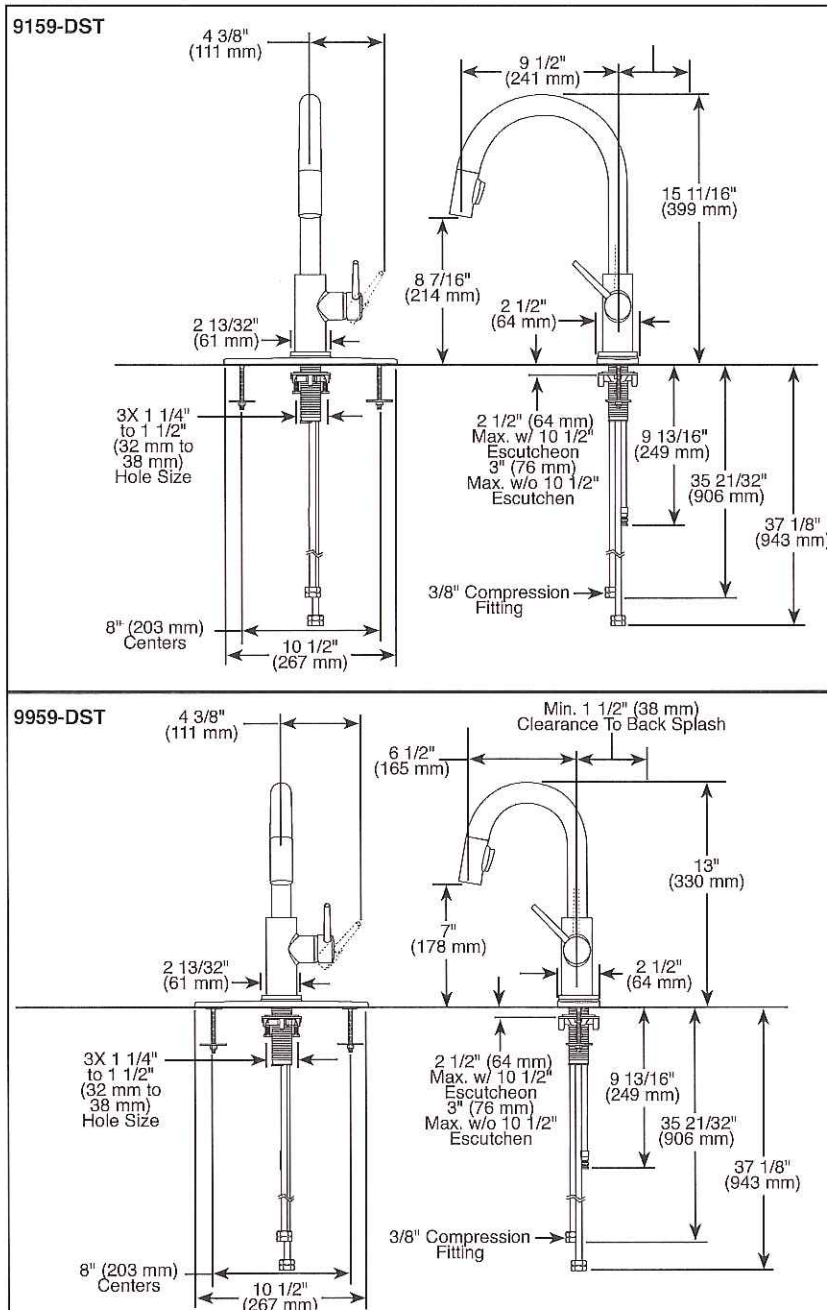


Submitted Model No.: _____

Specific Features: _____



▲ Designate proper finish suffix

Delta reserves the right (1) to make changes in specifications and materials, and (2) to change or discontinue models, both without notice or obligation. Dimensions are for reference only. See current full-line price book or www.deltafaucet.com for finish options and product availability.

DSP-K-9159-DST Rev. E

KITCHEN FAUCETS

- Trinsic® Collection
- Single Handle Deck Mount
- 2-Function Pull-Down Sprayer
- Single or 3 Hole Sink Applications
- Centermount or 8" (203 mm) Centers w/
Optional 10 1/2" (267 mm) Escutcheon
- MagnaTite® Magnetic Docking


STANDARD SPECIFICATIONS:

- Single handle, 2-function pull-down kitchen faucets for exposed mounting on single or three hole sinks.
- Solid brass fabricated body.
- 15 11/16" (399 mm) high, 9 1/2" (241 mm) long, spout swings 360°.
- Lever handle. Control mechanism shall be full-motion valve cartridge.
- Touch-Clean® sprayhead.
- Quick connect hoses.
- Pull-down wand operates in an aerated or spray mode via ergonomic buttons.
- Red/blue indicator on handle button to indicate hot/cold temperature.
- MagnaTite® magnetic docking.
- Dual integral check valves in sprayer.
- Mounting wrench to assist in tightening mounting nut securely.
- Hose travels inside mounting shank so it will not interfere with deck edges.
- Keyed 10 1/2" (267 mm) escutcheon to help alignment and aid installation.
- Maximum 1.80 gpm @ 60 psi, 6.8 L/min @ 414 kPa

WARRANTY

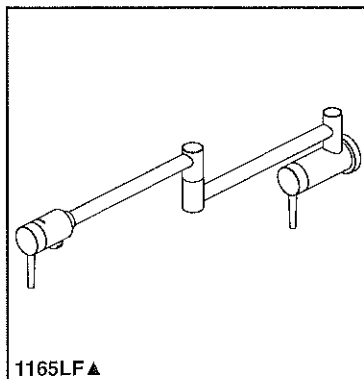
- Lifetime limited warranty on parts (other than electronic parts and batteries) and finishes; or, for commercial users, for 5 years from date of purchase.
 - 5 year limited warranty on electronic parts (other than batteries); or, for commercial users, for 1 year from the date of purchase.
- No warranty is provided on batteries.

COMPLIES WITH:

- ASME A112.18.1 / CSA B125.1
- ASME A112.18.6
-  Indicates compliance to ICC/ANSI A117.1
- Verified compliant with .25% weighted average Pb content regulations.

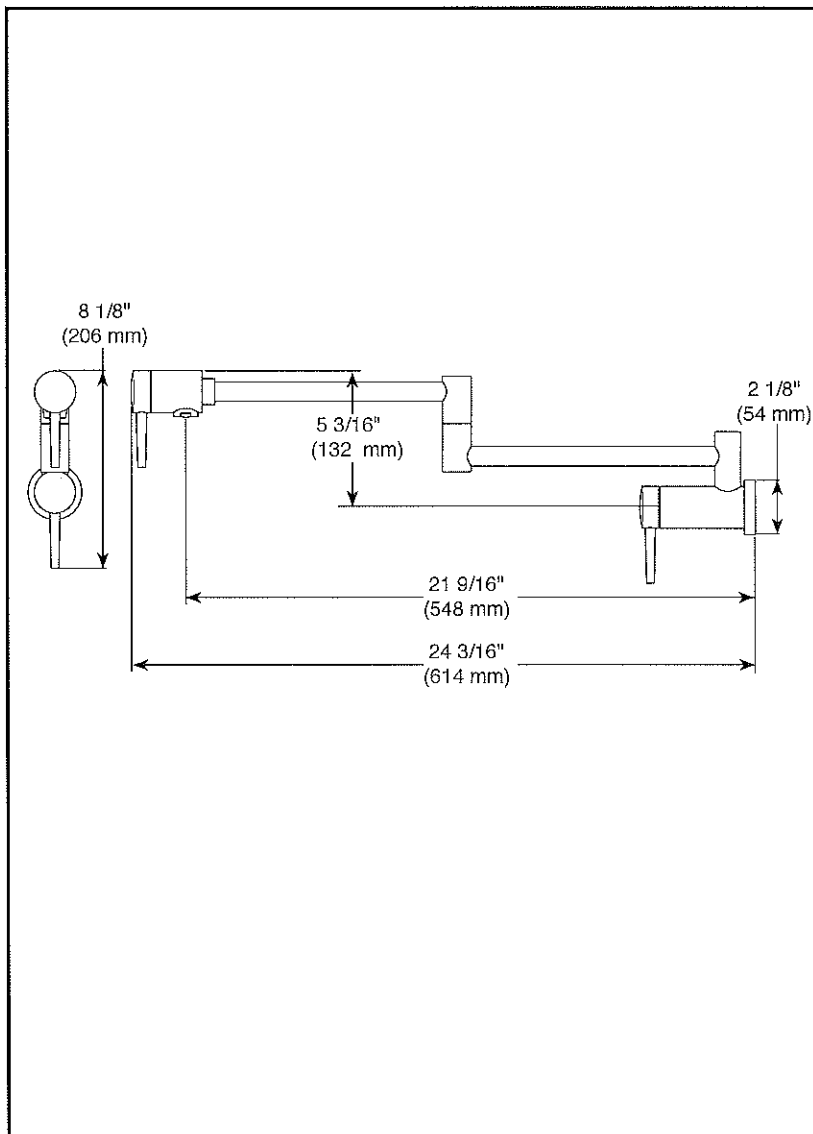
 **DELTA**
FAUCET COMPANY

55 E 111th Street, Indianapolis, Indiana 46280
350 South Edgeware Road, St. Thomas, ON N5P 4L1
© 2015 Masco Corporation of Indiana



Submitted Model No.: _____

Specific Features: _____



▲ Designate proper finish suffix

Delta reserves the right (1) to make changes in specifications and materials, and (2) to change or discontinue models, both without notice or obligation. Dimensions are for reference only. See current full-line price book or www.deltafaucet.com for finish options and product availability.

DSP-K-1165LF Rev. C



WALL MOUNT POT FILLER

- Wall Mounted Pot Filler
- Single Hole Application
- Cold Water Only
- Volume Controlled With Handles

STANDARD SPECIFICATIONS:

- 4.0 gpm @ 60 PSI, 15.1 L/min @ 414 kPa.
- Single hole wall mount.
- Dual handle design for easy operation.
- 24" dual jointed swing spout.
- Simple on/off control by rotating handle 90 (1/4 turn).
- 1" recommended hole size.
- Rough into 1/2" stub out.
- 1/2" I.P.S. inlets.
- Cold water connection only.
- Washerless ceramic valving.

WARRANTY

- Lifetime limited warranty on parts (other than electronic parts and batteries) and finishes; or, for commercial users, for 5 years from the date of purchase.
- 5 year limited warranty on electronic parts (other than batteries); or for commercial users, for 1 year from the date of purchase. No warranty is provided on batteries.

COMPLIES WITH

- ASME A112.18.1 / CSA B125.1
- Verified compliant with 0.25% weighted average Pb content regulations.

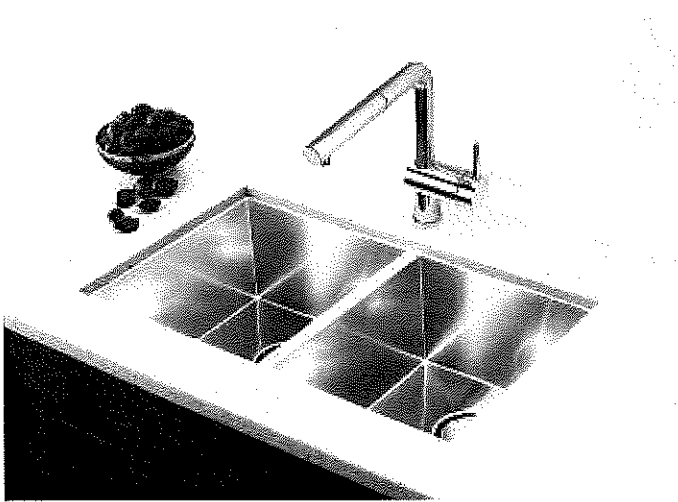


55 E. 111th Street, Indianapolis, Indiana 46280
350 South Edgeware Road, St. Thomas, Ontario Canada N5P 4L1
© 2015 Masco Corporation of Indiana

BLANCO QUATRUS U 2

Item No. 401247

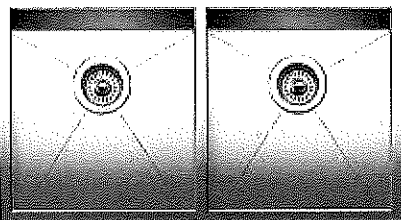
Features



The perfect combination of style, price and function.

- German designed and engineered
- Premium 304 series, 18 gauge stainless steel
- 18/10 chrome-nickel content for exceptional lustre, durability and strength
- Compact sized model
- Rear-positioned drain holes for maximum usable bowl and cabinet storage space
- Zero-radius corners, X-pattern drain grooves
- 3 1/2" (90 mm) stainless steel strainers included
- Undermount clips, template included
- Limited Lifetime Warranty

Surfaces

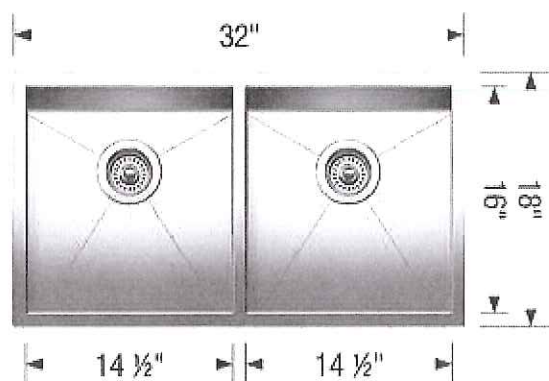


Satin brushed
finish

Satin brushed finish

Item No. 401247

Spec sheets/DXF



Top View

Scope of supply

3 1/2" (90 mm) stainless steel strainers, undemount clips, template

Design tips

Min. width of base cabinet : 915 mm

Bowl depth: 9" (230 mm) / 9" (230 mm)

Depending on cabinet construction, a different cabinet size may be required. Consult the cabinet manufacturer.

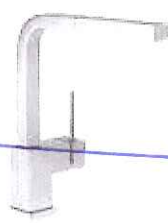
Faucets



BLANCO ICE DUAL SPRAY

Chrome

401319



BLANCO SILHOUETTE

Classic Steel

400549



BLANCO SONOMA

Chrome

401569

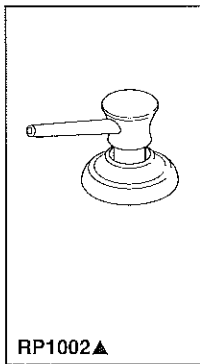


BLANCO CULINA Mini

Classic Steel

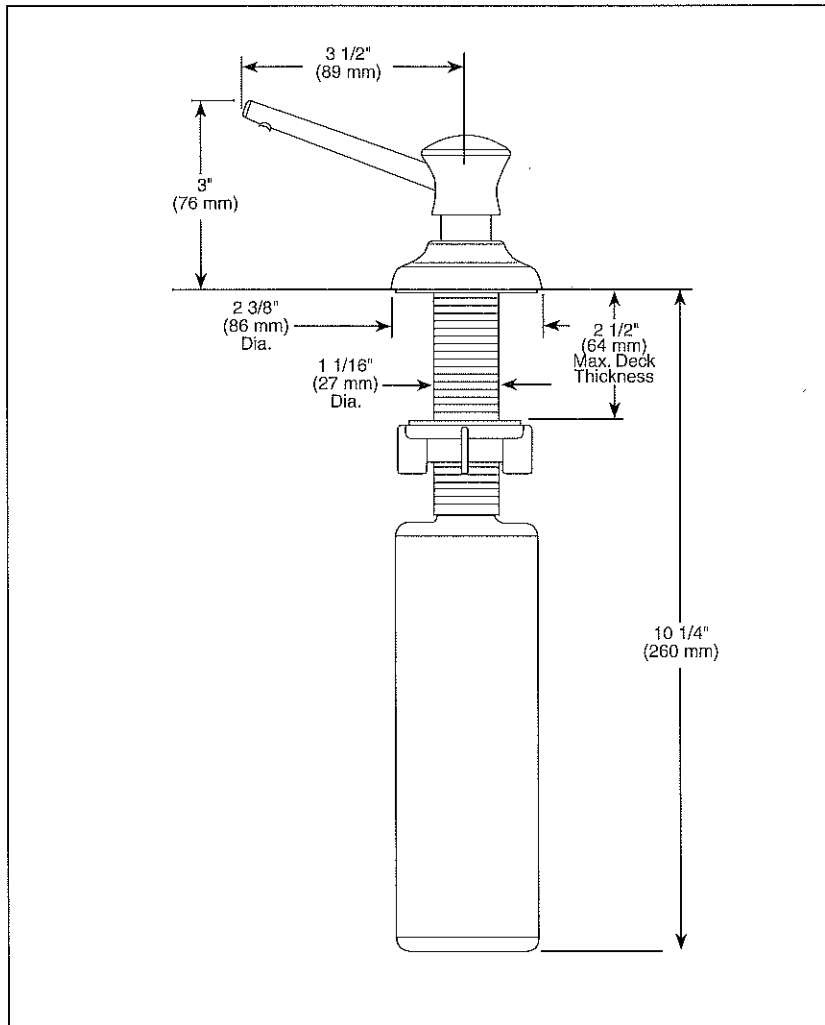
401568

Optional Accessories



Submitted Model No.: _____

Specific Features: _____



▲ Designate Proper Finish Suffix



SOAP DISPENSER

STANDARD SPECIFICATIONS:

- 13 ounce bottle.
- Refillable from above the deck.
- 2 1/2" max. deck thickness.
- Includes RP30395 refill funnel.

WARRANTY

- Lifetime Faucet and Finish Limited Warranty to the original consumer purchaser to be free from defects in material and workmanship.
- 5 Year Limited Warranty for usage in all industrial, commercial and business applications.

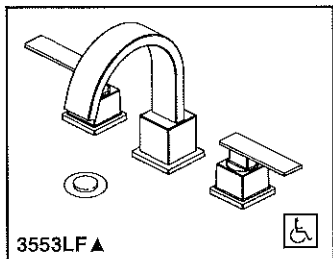
Delta reserves the right (1) to make changes in specifications and materials, and (2) to change or discontinue models, both without notice or obligation. Dimensions are for reference only. See current full-line price book or www.specselect.com for finish options and product availability.

DSP-K-RP1002 Rev. A

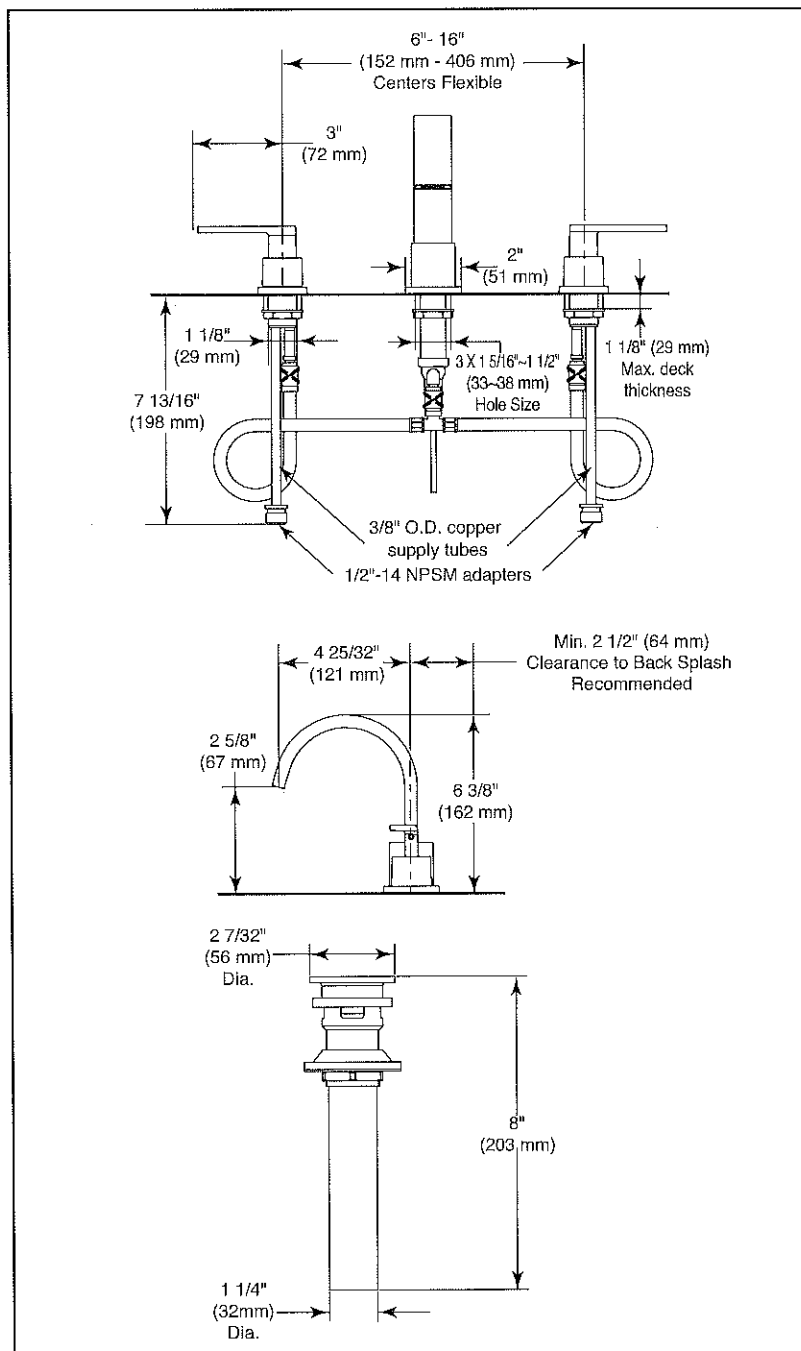


55 E. 111th Street, Indianapolis, Indiana 46280
395 Matheson Blvd. E., Mississauga, ON L4Z 2H2
© 2010 Masco Corporation of Indiana

Only w/ U/M & Granite



Submitted Model No.: _____
Specific Features: _____



▲ Designate proper finish suffix

Delta reserves the right (1) to make changes in specifications and materials, and (2) to change or discontinue models, both without notice or obligation. Dimensions are for reference only. See current full-line price book or www.deltafaucet.com for finish options and product availability.

DSP-L-3553LF Rev. D



LAVATORY FAUCETS

- Vero® Bath Collection
- Two Handle Widespread Deck Mount
- 3 Hole Sink Applications
- 6" to 16" Centers

STANDARD SPECIFICATIONS

- Maximum flow rate 1.5 gpm @ 60 PSI, 5.7 L/min @ 414 kPa.
- Solid brass fabricated end bodies.
- Widespread - 6" (152mm) to 16" (406 mm) centers.
- 4 25/32" (121 mm) long, 6 3/8" (162 mm) high, rigid spout.
- 1/4 turn handle stops
- Hot and cold stems are interchangeable.
- 3/8" O.D. copper supply tubes with 1/2"-14 NPSM adapters.
- Control mechanism is a rotating cylinder type with stainless steel plate and 90° rotating, with replaceable non-metallic seats.
- Models have metal drain with push pop-up type fitting with plated flange and stopper.

WARRANTY

- Lifetime limited warranty on parts (other than electronic parts and batteries) and finishes; or for commercial users, for 5 years from the date of purchase.
- 5 year limited warranty on electronic parts (other than batteries); or for commercial users, for 1 year from the date of purchase. No warranty is provided on batteries.



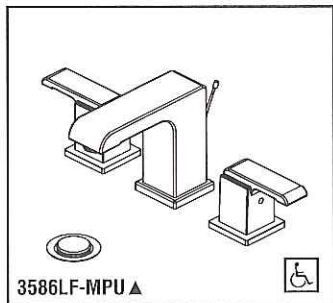
COMPLIES WITH:

- ASME A112.18.1 / CSA B125.1
- ASME A112.18.2 / CSA B125.2
- Indicates compliance to ICC/ANSI A117.1
- EPA WaterSense®
- Verified compliant with 0.25% weighted average Pb content regulations.

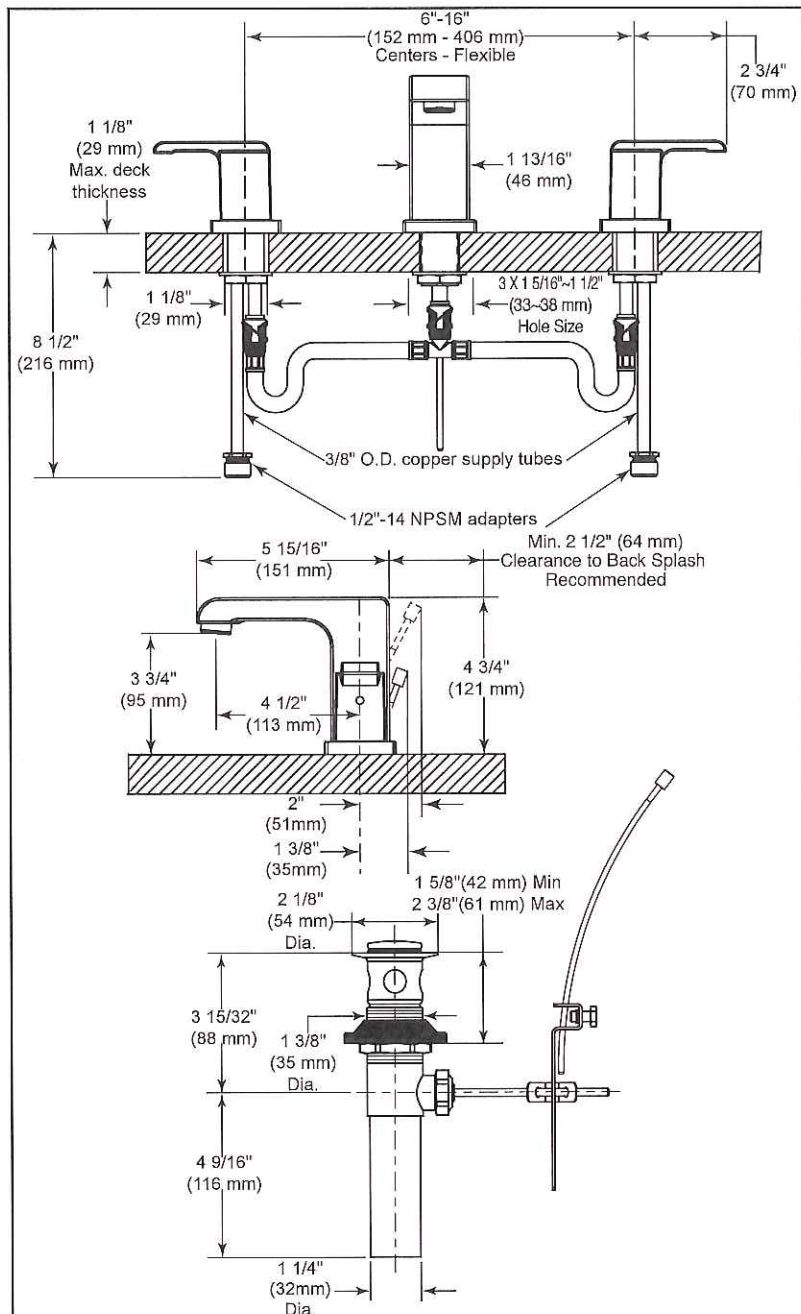


55 E. 111th Street, Indianapolis, Indiana 46280
350 South Edgeware Road, St. Thomas, Ontario Canada N5P 4L1
© 2015 Masco Corporation of Indiana

only U/M



Submitted Model No.: _____
Specific Features: _____



▲ Designate proper finish suffix

Delta reserves the right (1) to make changes in specifications and materials, and (2) to change or discontinue models, both without notice or obligation. Dimensions are for reference only. See current full-line price book or www.deltafaucet.com for finish options and product availability.

DSP-L-3586LF-MPU Rev. F



LAVATORY FAUCETS

- Arzo® Series
- Two Handle Widespread Deck Mount
- 3 Hole Sink Applications

STANDARD SPECIFICATIONS

- Maximum flow rate 1.5 gpm @ 60 PSI, 5.7 L/min @ 414 kPa.
- Widespread - 6" (152 mm) to 16" (406 mm) centers.
- 4 1/2" (114 mm) long, 4 3/4" (121 mm) high, rigid spout.
- Solid brass fabricated end valve and spout bodies.
- Hot and cold stems are interchangeable.
- 1/4 turn handle stops
- Control mechanism shall be of the rotating cylinder type with stainless steel plate and 180° rotation, with replaceable non-metallic seats operating in stainless steel lined sockets.
- 3/8" O.D. copper supply tubes with 1/2"-14 NPSM adapters.
- Metal drain pop-up type fitting with plated flange and stopper.
- Quick - Snap® installation.
- Colour coded plug buttons on handles for hot/cold identification.
- Standard mounting deck thickness can be extended 1" with RPI0612.

WARRANTY

- Lifetime limited warranty on parts (other than electronic parts and batteries) and finishes; or for commercial users, for 5 years from the date of purchase.
- 5 year limited warranty on electronic parts (other than batteries); or for commercial users, for 1 year from the date of purchase. No warranty is provided on batteries.



COMPLIES WITH

- ASME A112.18.1 / CSA B125.1
- ASME A112.18.2 / CSA B125.2
- NSF 61
- Indicates compliance to ICC / ANSI A117.1
- EPA WaterSense®
- Verified compliant with 0.25% weighted average Pb content regulations.



55 E. 111th Street, Indianapolis, Indiana 46280
350 South Edgeware Road, St. Thomas, Ontario Canada N5P 4L1
© 2015 Masco Corporation of Indiana



LAVATORY FAUCETS

- Vero® Bath Collection
- Single Handle Deck Mount
- Single Hole Sink Applications
- Single Hole Riser Model

STANDARD SPECIFICATIONS

- Solid brass fabricated body.
- Single handle lavatory deck faucet.
- Models have 3/8" O.D. copper supply tubes with 1/2"-14 NPSM adapters.
- Maximum flow rate 1.5 gpm @ 60 PSI, 5.7 L/min @ 414 kPa.
- GPM indicates max. 1.0 gpm @ 60 PSI, 3.8 L/min @ 414 kPa.
- Metal drain with push pop-up type fitting with plated flange and stopper (just for 553LF series models).

WARRANTY

- Lifetime limited warranty on parts (other than electronic parts and batteries) and finishes; or for commercial users, for 5 years from the date of purchase.
- 5 year limited warranty on electronic parts (other than batteries); or for commercial users, for 1 year from the date of purchase. No warranty is provided on batteries.

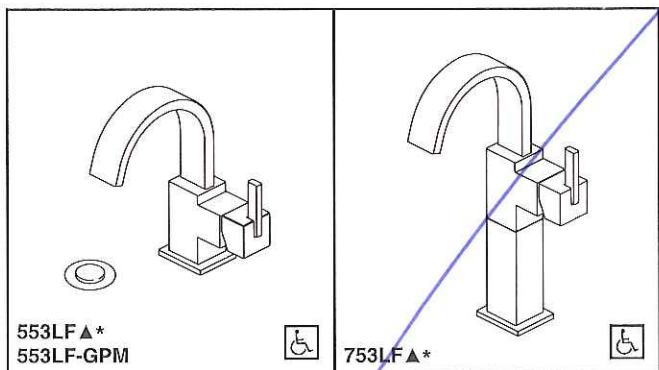


COMPLIES WITH:

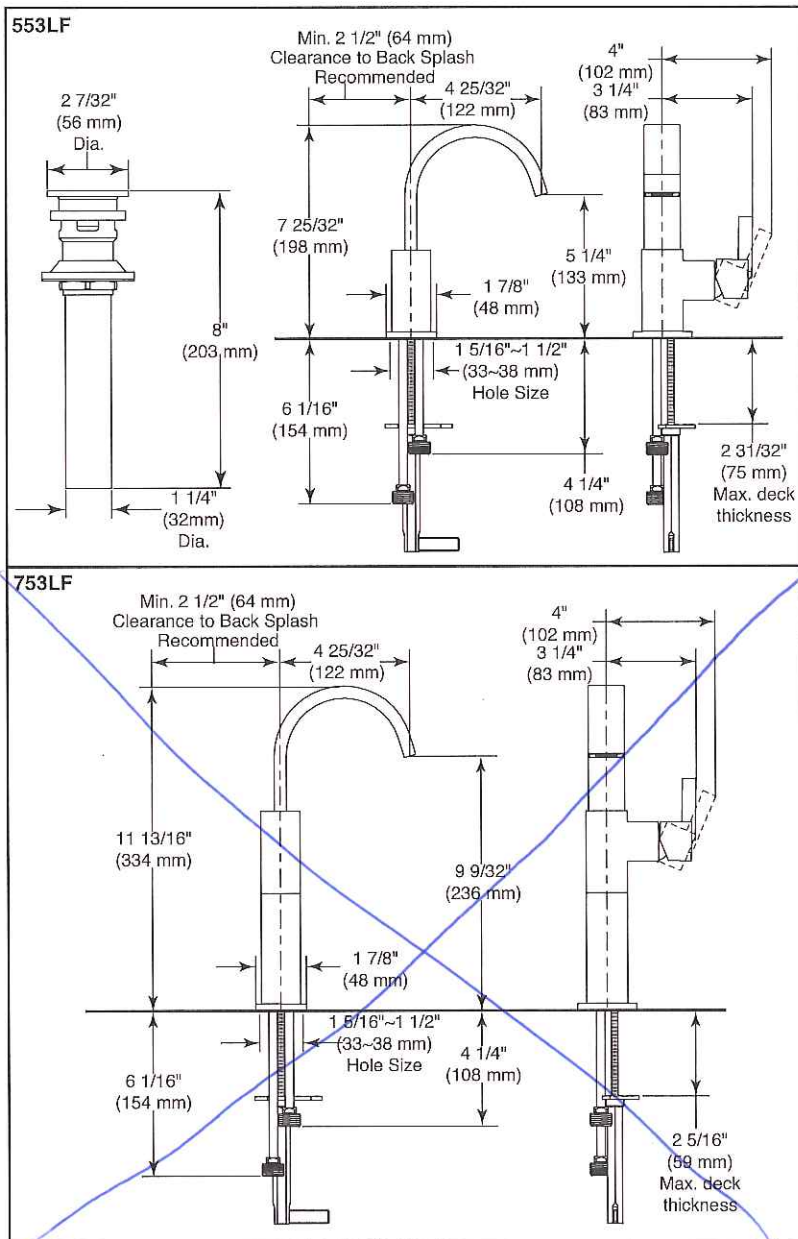
- ASME A112.18.1 / CSA B125.1
- ASME A112.18.2 / CSA B125.2
- Indicates compliance to ICC/ANSI A117.1
- ★ ■ EPA WaterSense®
- Verified compliant with 0.25% weighted average Pb content regulations.



55 E. 111th Street, Indianapolis, Indiana 46280
350 South Edgeware Road, St. Thomas, Ontario Canada N5P 4L1
© 2015 Masco Corporation of Indiana

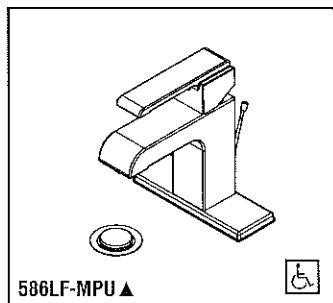


Submitted Model No.: _____
Specific Features: _____



▲ Designate proper finish suffix

Delta reserves the right (1) to make changes in specifications and materials, and (2) to change or discontinue models, both without notice or obligation. Dimensions are for reference only. See full-line price book or www.deltafaucet.com for finish options and product availability.



LAVATORY FAUCETS

- Arzo® Series
- Single Handle Deck Mount
- 1 or 3 Hole Sink Applications

Submitted Model No.: _____
Specific Features: _____

STANDARD SPECIFICATIONS:

- Maximum flow rate 1.5 gpm @ 60 PSI, 5.7 L/min @ 414 kPa.
- Ceramic cartridge with high temperature rotational limit stop.
- 1 or 3 hole installation.
- 4 1/2" (114 mm) long, 6 7/8" (175 mm) high, rigid spout.
- Maximum 2 1/4" (54 mm) deck thickness.
- Colour coded plug button on handle for hot/cold identification.
- Handle 4 1/4" (108 mm) lever handle - ADA compliant -color indexed.
- Metal drain pop-up type fitting with plated flange and stopper.

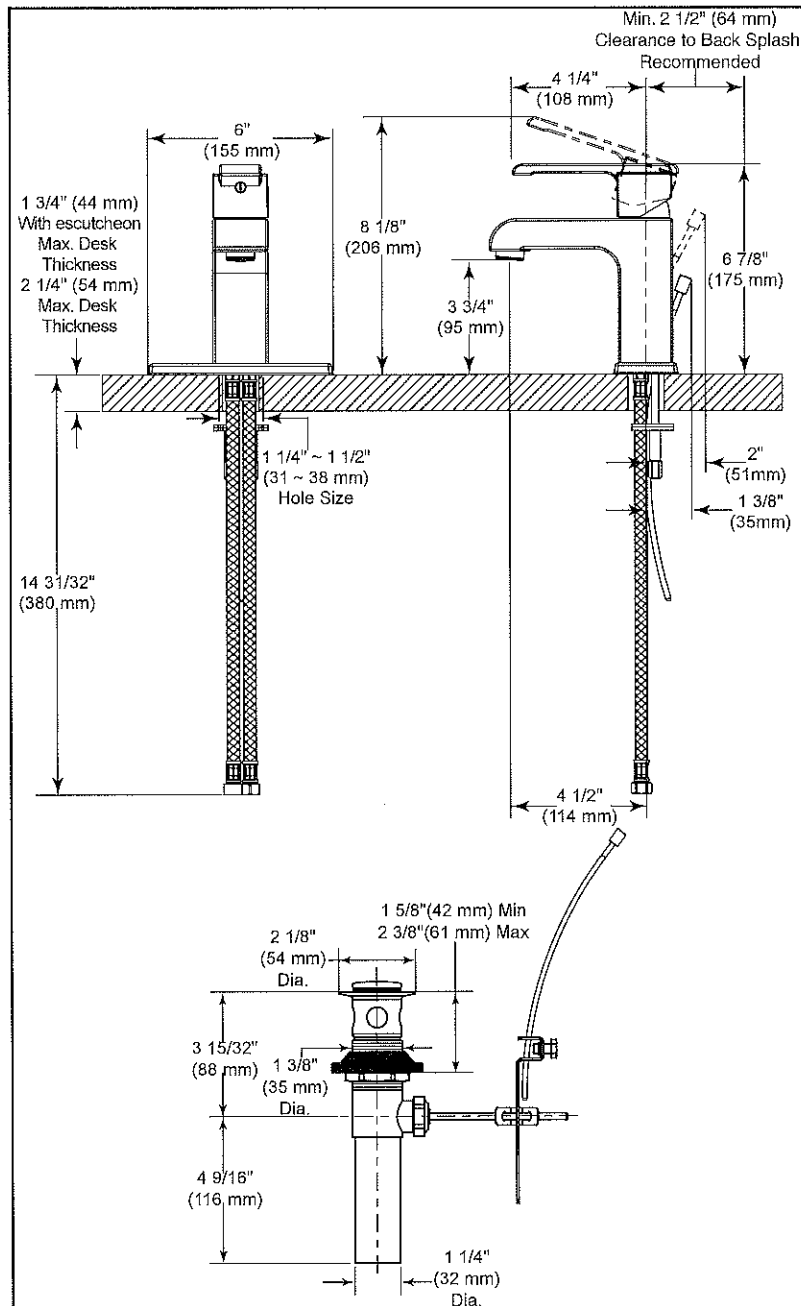
WARRANTY

- Lifetime limited warranty on parts (other than electronic parts and batteries) and finishes; or for commercial users, for 5 years from the date of purchase.
- 5 year limited warranty on electronic parts (other than batteries); or for commercial users, for 1 year from the date of purchase. No warranty is provided on batteries.



COMPLIES WITH:

- ASME A112.18.1 / CSA B125.1
- ASME A112.18.2 / CSA B125.2
- Indicates compliance to ICC/ANSI A117.1
- EPA WaterSense®
- Verified compliant with 0.25% weighted average Pb content regulations.



▲ Designate proper finish suffix

Delta reserves the right (1) to make changes in specifications and materials, and (2) to change or discontinue models, both without notice or obligation. Dimensions are for reference only. See current full-line price book or www.deltafaucet.com for finish options and product availability.

DSP-L-586LF-MPU Rev. B



55 E. 111th Street, Indianapolis, Indiana 46280
350 South Edgeware Road, St. Thomas, Ontario Canada N5P 4L1
© 2015 Masco Corporation of Indiana

CALVIN

19 $\frac{1}{4}$ " OVAL UNDERMOUNT SINK

□ 4220CFY Undermount Sink

Product Specs:

- Vitreous china
- Front overflow hole
- Template and mounting hardware supplied

Overall Dimensions (W x D x H):

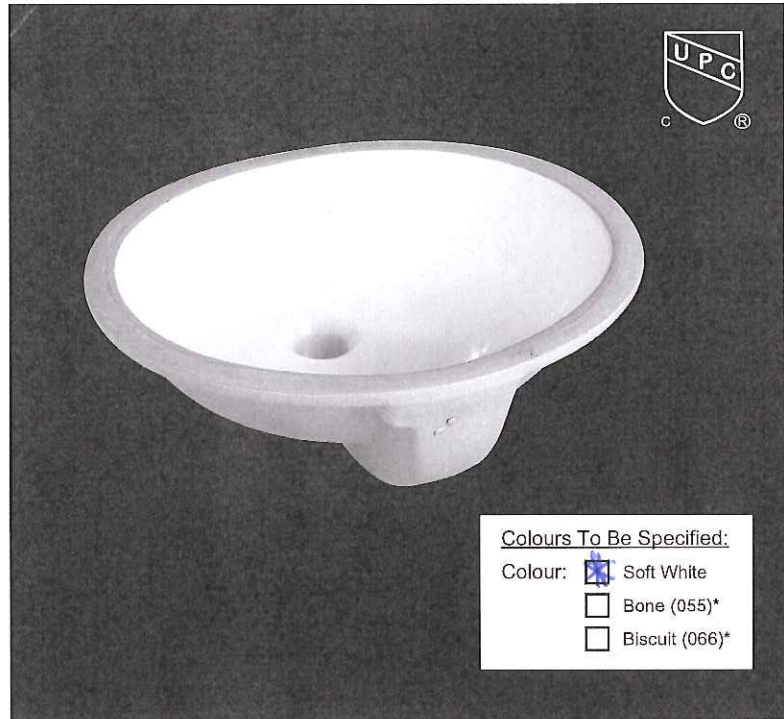
(OD): 490mm(19 $\frac{1}{4}$ ") x 410mm(16 $\frac{1}{8}$ ") x 195mm(7 $\frac{7}{8}$ ")
 (ID): 430mm(17") x 350mm(13 $\frac{3}{4}$ ") x 145mm(5 $\frac{3}{4}$ ")

Compliance Certifications:

- Meets or exceeds the following:
- IAPMO cUPC
 - ASME A112.19.2 / CSA B45.1-2013

Shipping:

Cube 1.53
 GW 19 lbs



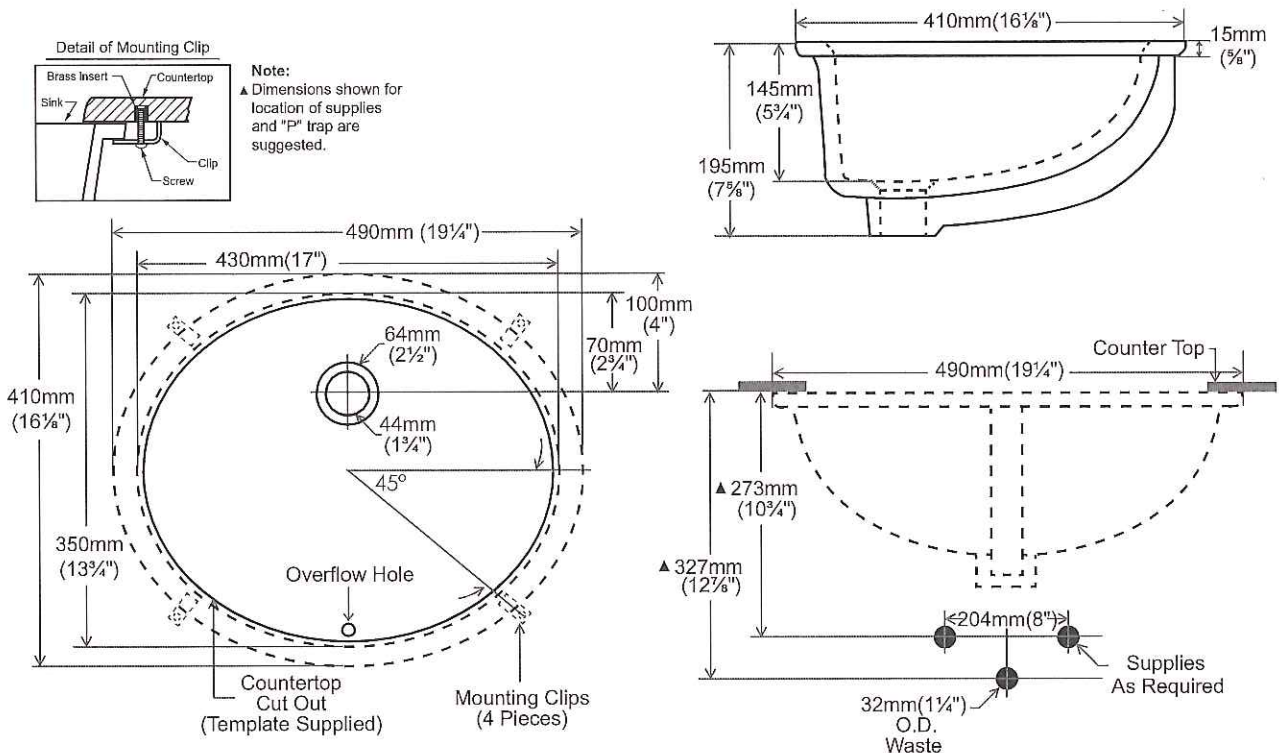
Colours To Be Specified:

- Colour: ☒ Soft White
☐ Bone (055)*
☐ Biscuit (066)*

Notes:

Dimensions of fixtures are nominal and may vary within the range of tolerances established by ASME standard A112.19.2. These measurements are subject to change or cancellation. No responsibility is assumed for use of superseded or voided pages.

*Bone and Biscuit available through Direct import (CIF) only.



Specifications:

- 2 Slow close drawers
- Carved drawer pulls
- Assembled vanity
- White vitreous china sink included
- Single hole faucet drilling
- Pre-attached mounting system
- Faucet not included

Overall Dimensions:

24" (W) x 18" (D) x 20⁷/₈" (H)

Shipping:

Cube	10.24
GW	93.5 lbs

Item to be specified:

Ash Grey:

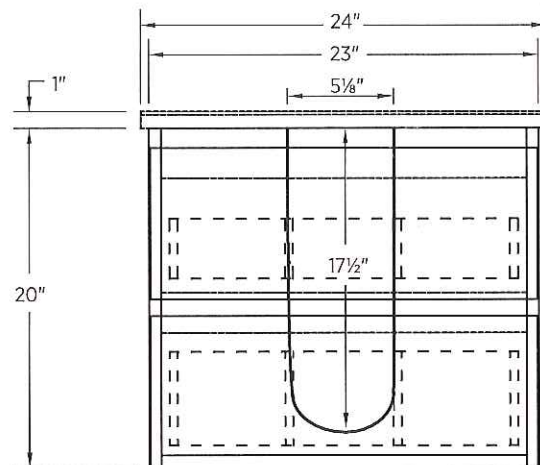
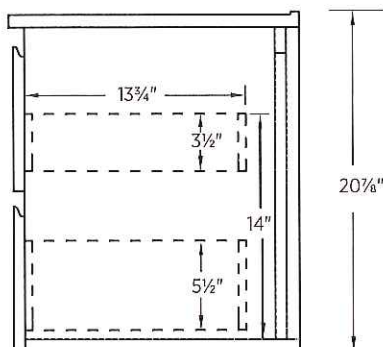
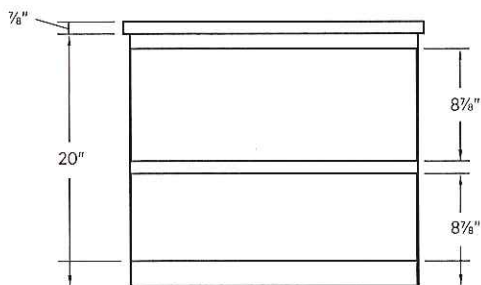
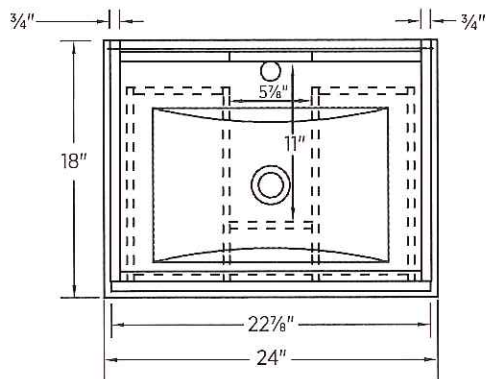
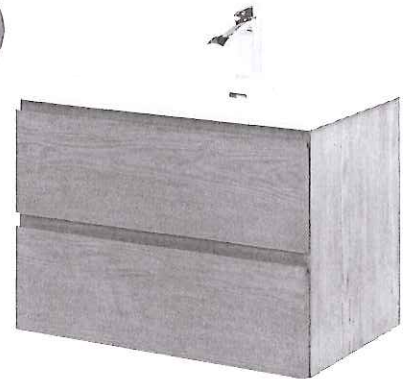
☒ **MAAG2318**
UPC: 721015423584

High Gloss Grey:

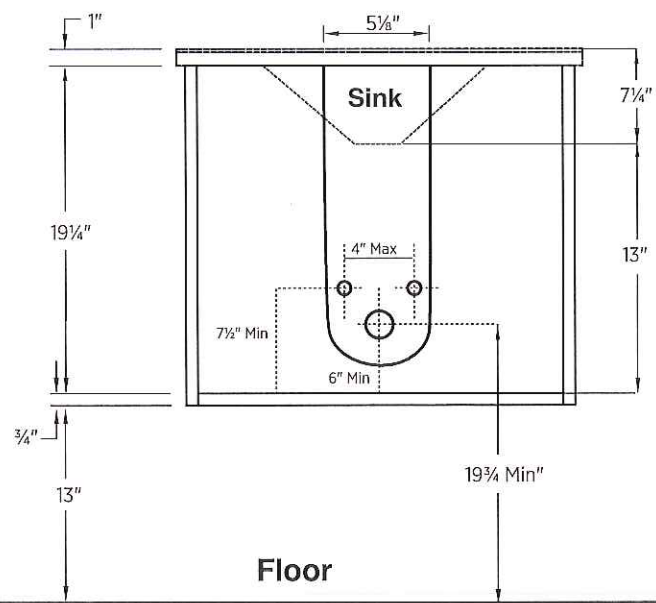
☐ **MAHG2318**
UPC: 721015423607

White:

MAWA2318
UPC: 721015423935



Rough in dimensions

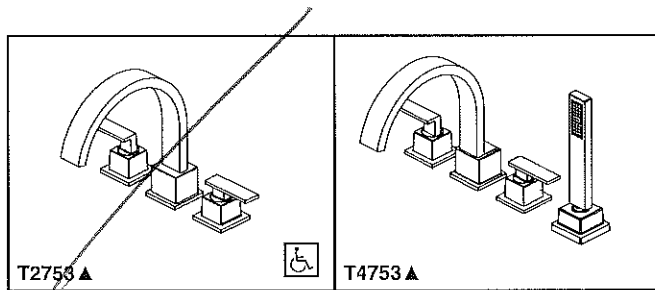


Notes:

Important: Dimensions of product are nominal and may vary within the range of tolerances allowed. These measurements are subject to change or cancellation. No responsibility is assumed for use of superseded or voided pages.

Revised: June. 2015

CANADA: 5970 Chedworth Way, Unit A, Mississauga, Ontario L5R 3V5 T: (888) 256-7551 F: (905) 507-2006 www.foremostcanada.com
US: 6241 Northwind Parkway, Hobart, Indiana 46342 T: (888) 620-3667 F: (219) 947-3630 www.foremostgroups.com

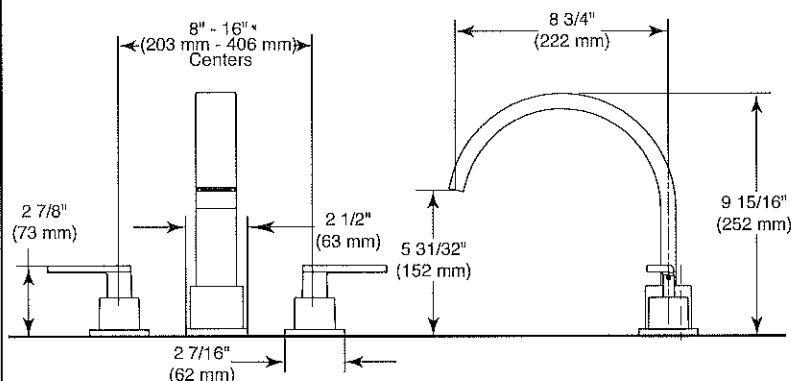


ROMAN TUB/WHIRLPOOL FAUCET TRIM

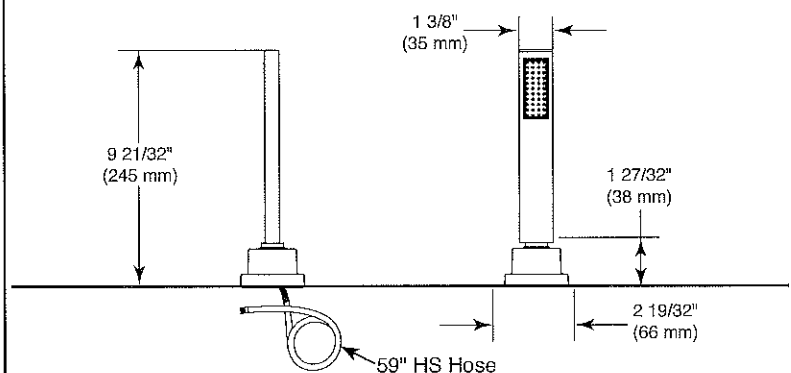
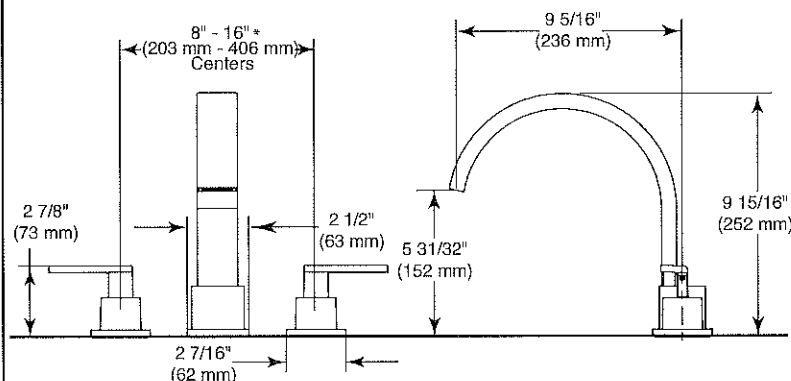
Submitted Model No.: _____
Specific Features: _____

- Vero™ Collection
- Three Hole Installation (T2753 Series)
- Four Hole Installation (T4753 Series)

T2753



T4753



*Recommend 10-16" centers to ensure full handle clearance.

▲ Designate proper finish suffix

STANDARD SPECIFICATIONS

- Handshower flow rate 2.5 gpm @ 60 psi, 9.5 L/min @ 414 kPa
- Trim only for two handle Roman Tub faucet for concealed mounting
- Temperature and volume controlled with handles.
- Rough-In kit must also be ordered to complete installation
 - R4707 for four hole
 - R2700 or R2707 for three hole
 - RP23601 for three hole 10" fixed installation
 There are separate specification sheets on each rough-in kit if more details are required
- Handshower includes double check valves for backflow prevention (T4753)

WARRANTY

- Lifetime limited warranty on parts (other than electronic parts and batteries) and finishes; or, for commercial users, for 5 years from date of purchase.
- 5 year limited warranty on electronic parts (other than batteries); or, for commercial users, for 1 year from the date of purchase. No warranty is provided on batteries.

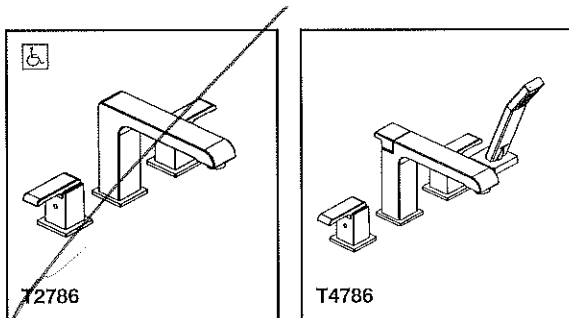
COMPLIES WITH:

- ASME A112.18.1 / CSA B125.1
- Indicates ADA compliance to ICC/ANSI A117.1



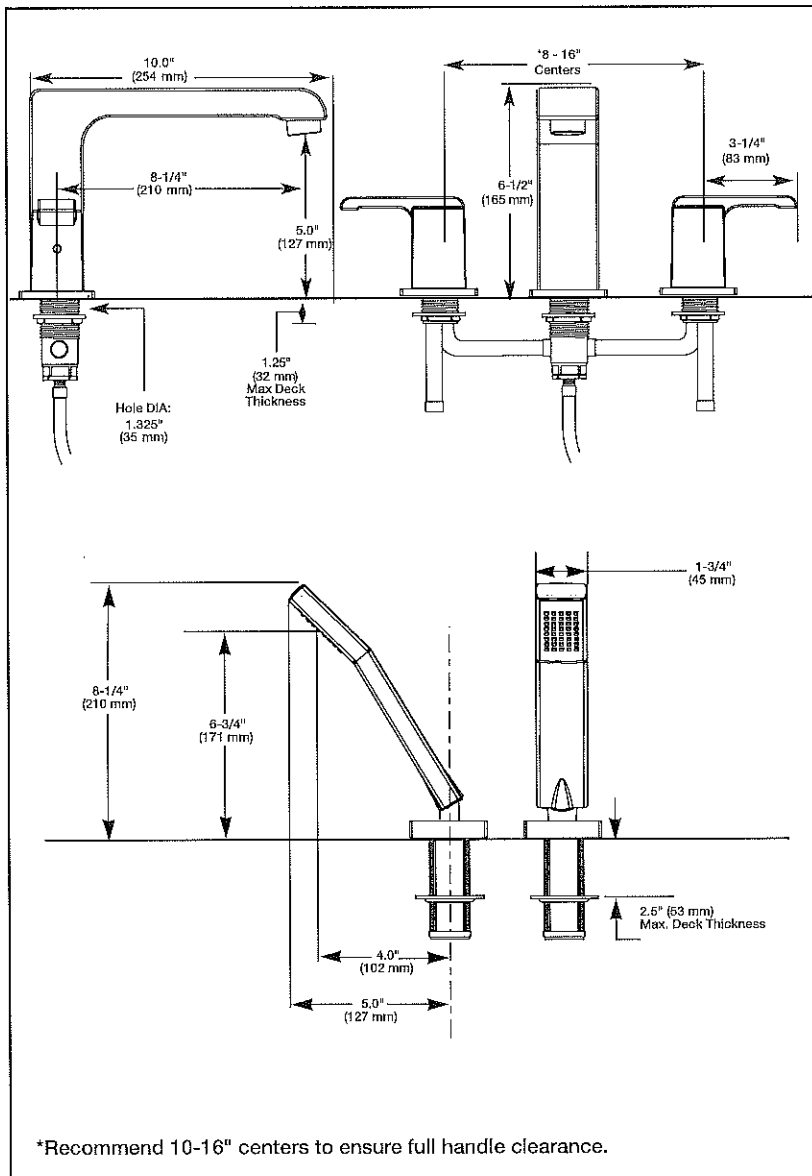
55 E. 111th Street, Indianapolis, Indiana 46280
350 South Edgeware Rd, St. Thomas, ON N5P 4L1
© 2015 Masco Corporation of Indiana

Delta reserves the right (1) to make changes in specifications and materials, and (2) to change or discontinue models, both without notice or obligation. Dimensions are for reference only. See full-line price book or www.deltafaucet.com for finish options and product availability.



Submitted Model No.: _____

Specific Features: _____



ROMAN TUB/WHIRLPOOL FAUCET TRIM

- Arzo® Collection
- 3-Hole Installation (T2786)
- 4-Hole Installation (T4786)
- Flexible Deck or Ledge Mount


STANDARD SPECIFICATIONS:

- Washerless.
- Handshower flow rate: 2.5 gpm @ 60 psi, 9.45 L/min @ 414 kPa.
- Solid brass spout body.
- Control mechanism shall be of the rotating cylinder type with stainless steel plate and 180° rotation, with stainless steel sockets.
- Hot and cold stems are interchangeable.
- Temperature and volume controlled with handles.
- All operating parts shall be replaceable from the top.
- Rough-In kit must also be ordered to complete installation. (R4707 series for 4-hole, R2707 series for 3-hole or RP23611). There are separate specification sheets on each rough-in kit if more details are required.

WARRANTY

- Lifetime limited warranty on parts (other than electronic parts and batteries) and finishes; or, for commercial users, for 5 years from date of purchase.
- 5 year limited warranty on electronic parts (other than batteries); or, for commercial users, for 1 year from the date of purchase. No warranty is provided on batteries.

COMPLIES WITH:

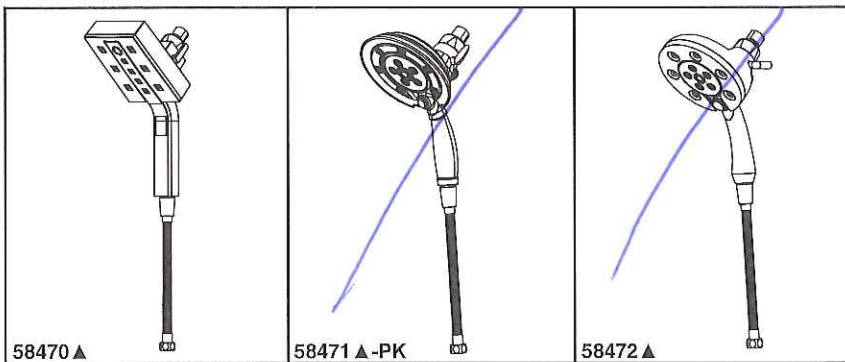
- ANSI/ASME A112.18.1/CSA B125.1
-  Indicates compliance to ICC/ANSI A117.1



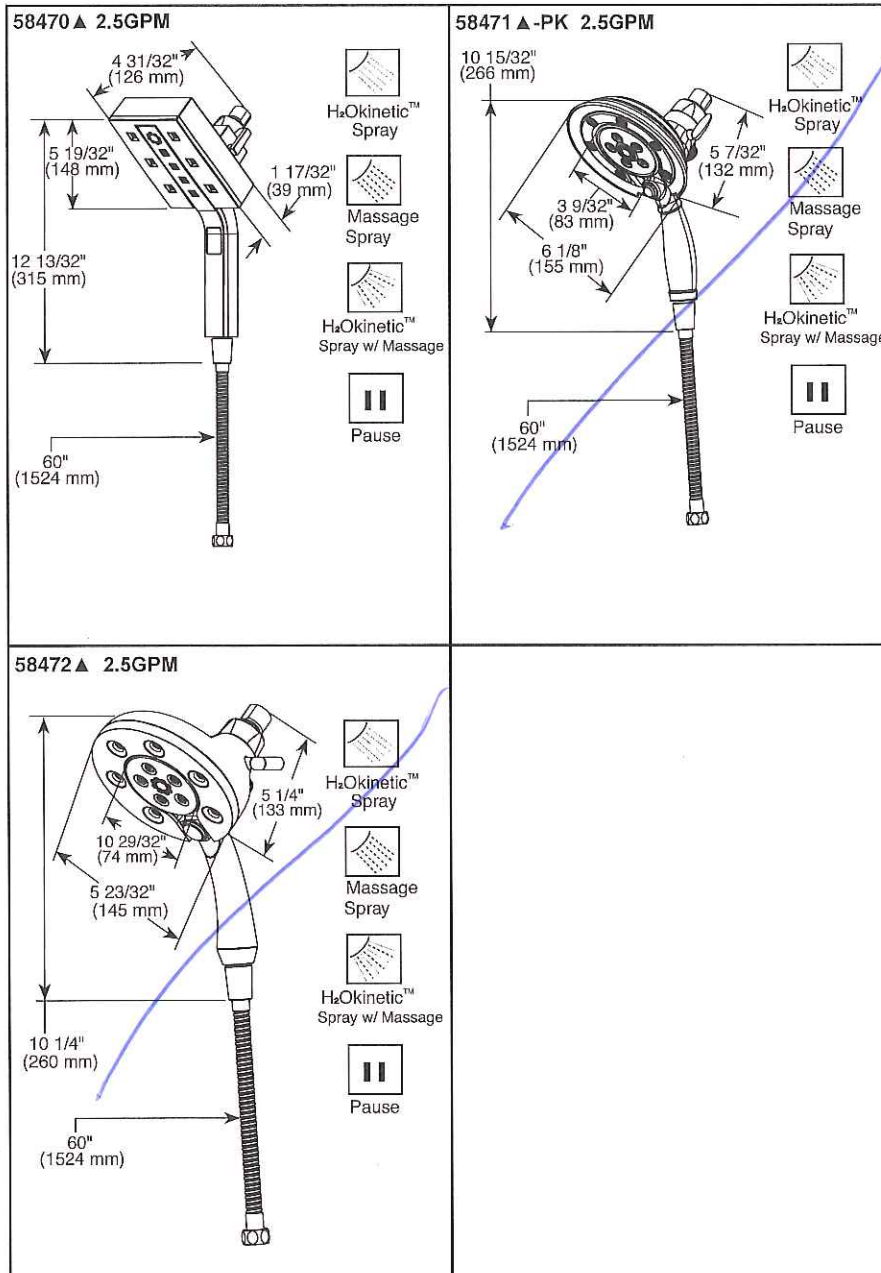
Delta reserves the right (1) to make changes in specifications and materials, and (2) to change or discontinue models, both without notice or obligation. Dimensions are for reference only. See current full-line price book or www.specselect.com for finish options and product availability.

DSP-B-T2786 Rev. C

55 E. 111th Street, Indianapolis, Indiana 46280
395 Matheson Blvd. E., Mississauga, ON L4Z 2H2
© 2015 Masco Corporation of Indiana



Submitted Model No.: _____
 Specific Features: _____



▲ Designate proper finish suffix
 Delta reserves the right (1) to make changes in specifications and materials, and (2) to change or discontinue models, both without notice or obligation. Dimensions are for reference only. See current full-line price book or www.deltafaucet.com for finish options and product availability.
 DSP-B-58470 Rev. C



IN2ITION®

- 2-In-1 Shower
- H₂Okinetic Technology® Shower
- 4-Spray Settings Handshower
- Magnetite Docking
- Push Button Selection

STANDARD SPECIFICATIONS:

- Integrated handshower docks securely into showerhead when not in use.
- Multiple handshower spray settings.
- 3-Way diverter for extra spray options.
- Fixed showerhead and handshower all in one.
- Change spray modes with pushbutton.
- 60" (1524 mm) stretchable metal hose, stretches to 82" (2083) for extra reach.
- Maximum water consumption 2.5 gpm (9.5 L/min) @ 80 psi.
- Actual water consumption 1.5 gpm (5.7 L/min) @ 45 psi (58470 & 58472), 1.6 gpm (6.2 L/min) @ 45 psi (58471).
- For use with automatic compensating valves rated at 1.5 gpm (5.7 L/min) or less.

WARRANTY

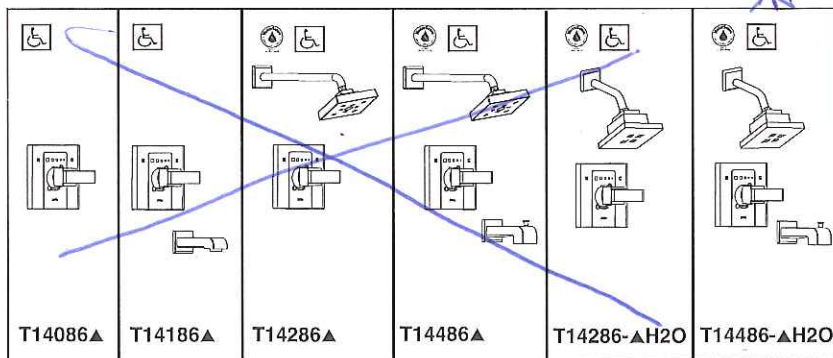
- Lifetime limited warranty on parts (other than electronic parts and batteries) and finishes; or for commercial users, for 5 years from the date of purchase.
- 5 year limited warranty on electronic parts (other than batteries); or for commercial users, for 1 year from the date of purchase. No warranty is provided on batteries.

COMPLIES WITH

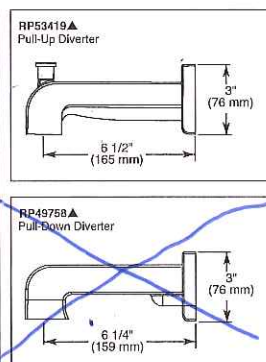
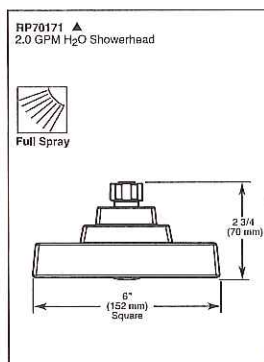
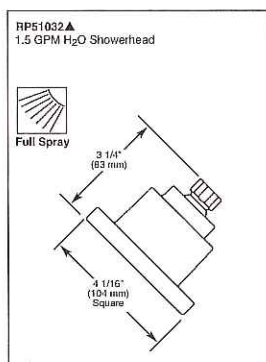
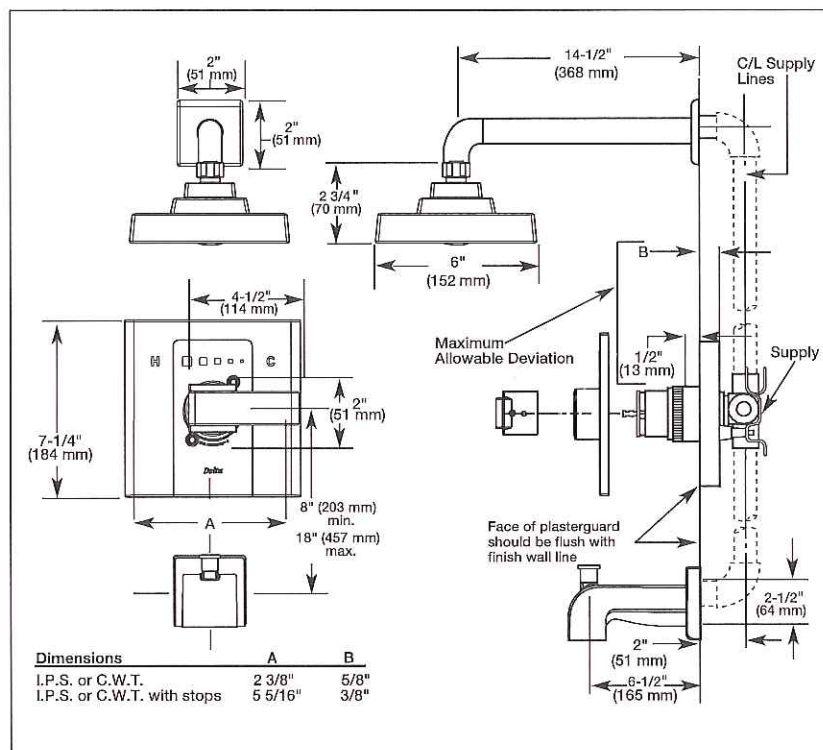
- ASME A112.18.1/CSA B125.1



55 E. 111th Street, Indianapolis, Indiana 46280
 350 South Edgeware Road, St. Thomas, Ontario Canada N5P 4L1
 © 2015 Masco Corporation of Indiana



Submitted Model No.: _____
 Specific Features: _____



▲ Designate Proper Finish Suffix



TUB AND SHOWER FAUCET TRIM

- Arzo® Series
- Valve Only Trim (T14086)
- Tub Only Trim (T14186)
- Shower Only Trim (T14286)
- Tub/Shower Trim - Pull-Up Tub Spout (T14486)
- Single Handle

STANDARD SPECIFICATIONS:

- Pressure balanced single handle bath mixing valve trim.
- For use with MultiChoice® Universal rough valve body. (R10000 Series)
- Lever handle.
- Temperature only controlled with handle.
- Field adjustable to limit handle rotation into hot water zone.
- 120° maximum handle rotation.
- All parts replaceable from the front of the valve.

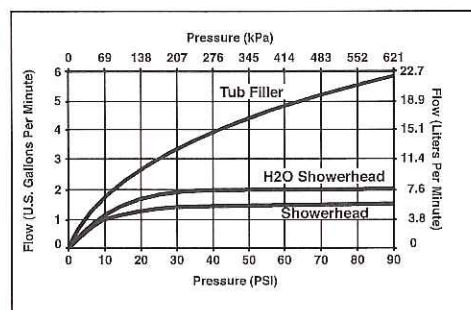
WARRANTY

- Lifetime limited warranty on parts (other than electronic parts and batteries) and finishes; or, for commercial users, for 5 years from date of purchase.
- 5 year limited warranty on electronic parts (other than batteries); or, for commercial users, for 1 year from the date of purchase. No warranty is provided on batteries.



COMPLIES WITH:

- ASME A112.18.1 / CSA B125.1
- Indicates compliance to ICC/ANSI A117.1 - Valve control only.
- EPA WaterSense®



Delta reserves the right (1) to make changes in specifications and materials, and (2) to change or discontinue models, both without notice or obligation. Dimensions are for reference only. See current full-line price book or www.deltafaucet.com for finish options and product availability.

DSP-B-T14086 Rev. I

55 E. 111th Street, Indianapolis, IN 46280
 350 South Edgeware Road, St. Thomas, ON N5P 4L1
 © 2015 Masco Corporation of Indiana

4.8Lpf / 1.28Gpf 1PC 16⁷/₈" HIGH ELONGATED

☒ 4710BOV Lined Tank

☐ 4710BOVU Unlined Tank

Product Specs:

- High efficiency toilet
- 4.8Lpf/1.28Gpf
- Elongated bowl with concealed skirted trapway
- Vitreous china
- 16⁷/₈" Plus Height bowl
- Soft white tank lever
- 12" (305mm) Rough-in
- 2" Fully glazed ball pass trapway
- 3" Flapper
- Siphon jet flush action
- Water surface (240mm x 170mm) 9¹/₂" x 6⁵/₈"
- Decorative chrome and soft white side caps included
- Smooth close toilet seat included



Overall Dimensions:

392mm (W) x 725mm (D) x 760mm (H)

15¹/₂" (W) x 28¹/₂" (D) x 29⁵/₈" (H)

Compliance Certifications:

Meets or exceeds the following:

- IAPMO cUPC
- US EPA WaterSense
- ASME A 12.19.2 / CSA B45.1-2013
- ADA Guidelines & ANSI A117.1
- MaP Tested 1000g
- LEED Compliant

Shipping:

Cube 9.39

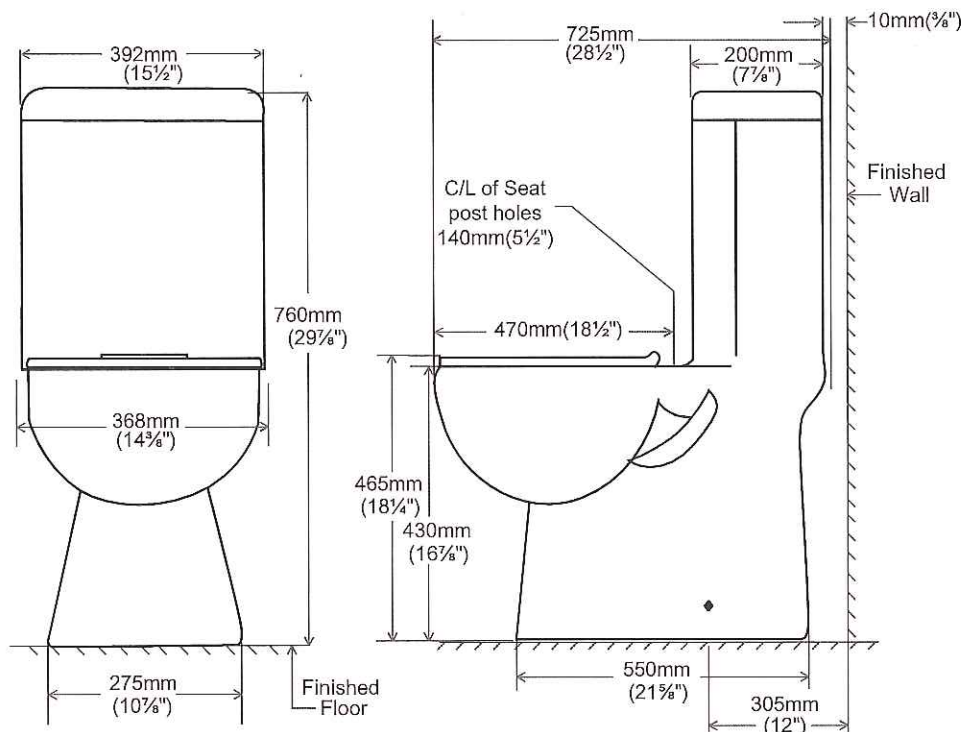
GW 92.50lbs

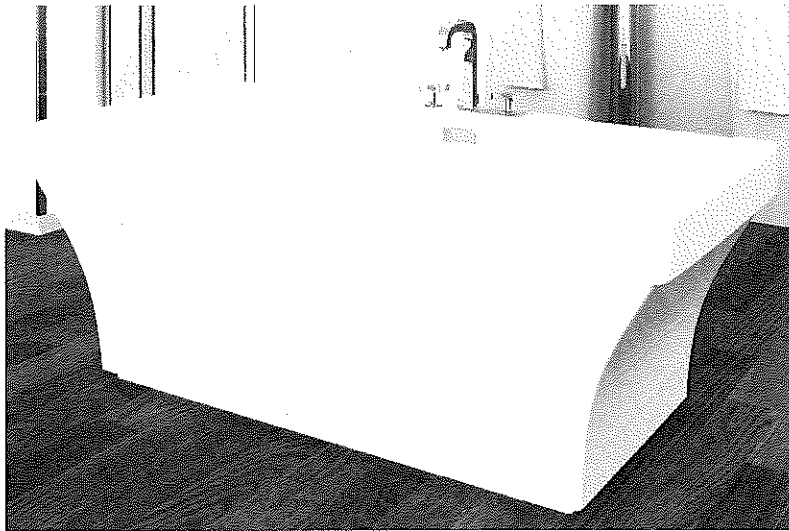
Notes:

This toilet is designed to rough-in at a minimum dimension of 305mm (12") from finished wall to C/L of outlet. Supply line not included with fixture and must be ordered separately.

Important: Dimensions of fixtures are nominal and may vary within the range of tolerances established by ASME standard A112.19.2. These measurements are subject to change or cancellation. No responsibility is assumed for use of superseded or voided pages.

Products are designed to comply ADA/ANSI A117.1 Standard. It shall be the responsibility of the installer to comply with the local disability codes and standards prior to installing the product.





Two Piece Freestanding Collection

CF2005 Two Piece Freestanding Soaker

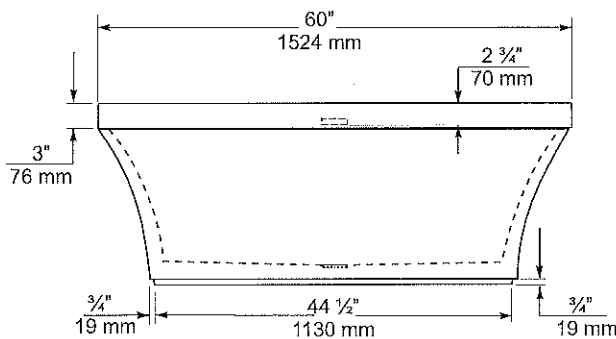
Size: 60" x 32" x 22"
1524 mm x 813 mm x 559 mm

PRODUCT FEATURES & BENEFITS

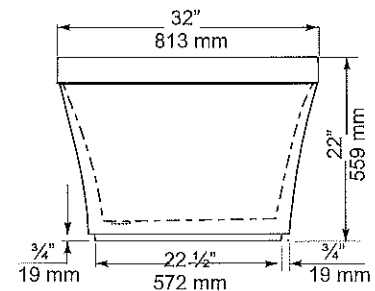
- ☐ Vacuum formed acrylic reinforced with fiberglass
- ☐ Scratch, stain and fade resistant high gloss finish
- ☐ Installation friendly two piece design
- ☐ Accepts deck mounted faucet
- ☐ Includes integral pop up drain and overflow
- ☐ Includes levelling feet

TWO PIECE ASSEMBLY

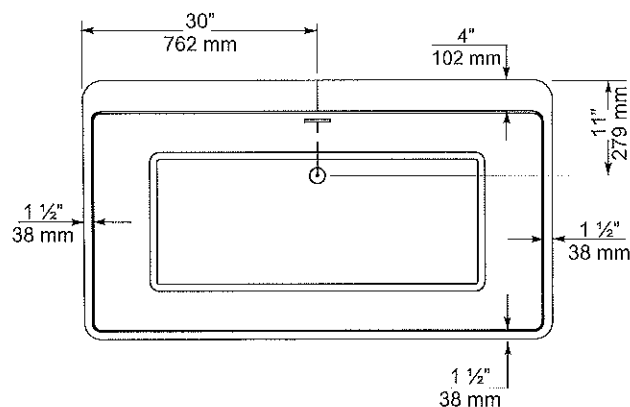
FRONT VIEW



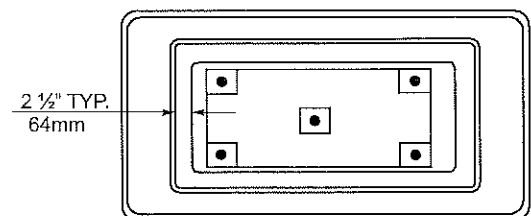
END VIEW



TOP VIEW



BOTTOM VIEW



GENERAL SPECIFICATIONS

Average Weight	105 lb	48 kg
Bathing Well at bottom	43 1/2" x 19"	1105 x 483 mm
Capacity Drain to Overflow	51 gall.	193 litres
Water Depth Drain to Overflow	15 3/4"	400 mm
Drain Opening (dia.)	2"	51 mm
Overflow Opening	2 1/4" x 1/2"	57 x 13 mm
Drain to Floor Clearance	3 1/2"	89 mm

REFER TO INSTALLATION INSTRUCTIONS FOR ADDITIONAL INFORMATION.

IMPORTANT: Dimensions of fixtures are nominal and may vary $\pm 1/4"$ (6 mm). Weight may vary ± 5 lb (2.3 kg). Drawing is not to scale. These measurements are subject to change at manufacturer's discretion.

Compliance Certifications - Meets or Exceeds the following Specifications:

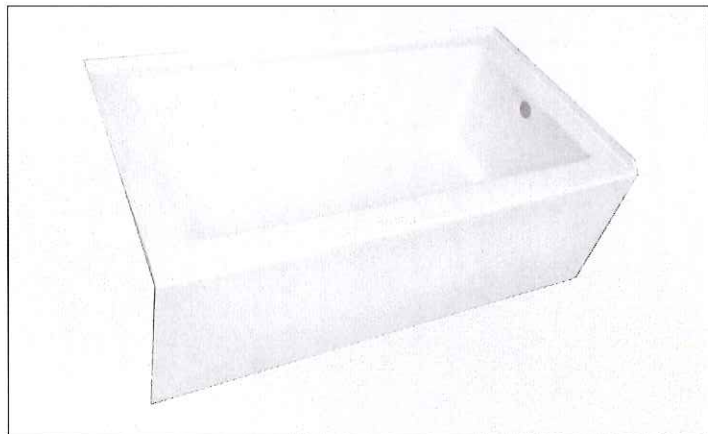
- CAN/CSA - B 45.5. & B 45.0.



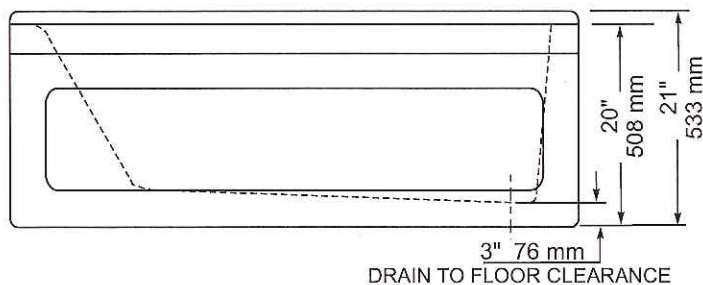


adora

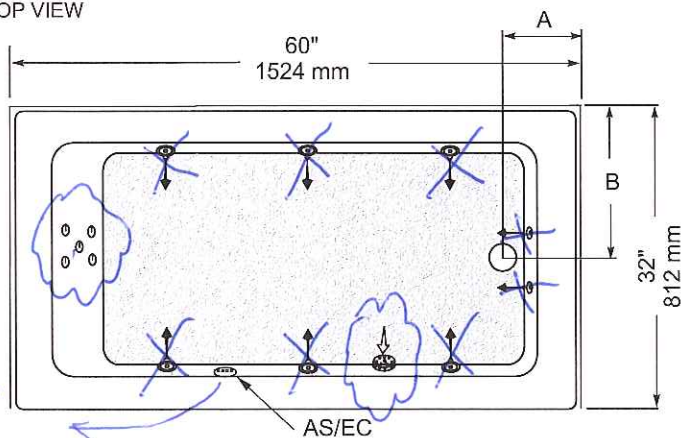
Product Specification Sheet



FRONT VIEW



TOP VIEW



PRODUCT BY PROVINCE	A	B
BC, AB, SK, MB, NT, NU, YT	8" 203 mm	16" 406 mm
ON, QC, PE, NS, NB, NL	8 3/4" 222 mm	15 1/2" 394 mm

NOTES: Please confirm measurements on actual product to ensure proper identification.

Bathtub to be installed on the floor supported by the 5 feet. Shim if required to level the bathtub for adequate drainage. Whirlpool and blower motor protrude outside the confines of the bathtub periphery for combination only.

Refer to installation instructions for additional information.

IMPORTANT: Dimensions of fixtures are nominal and may vary $\pm 1/4"$ (6 mm). Weight may vary ± 5 lb (2.3 kg). Drawing is not to scale. These measurements are subject to change at manufacturer's discretion.

BO62L/R	Soaker
WO62L/R	Whirlpool
WB62L/R	Whirlpool - Back jets
AO62L/R	Jet Air®
AB62L/R	Jet Air® - Back jets
UB62L/R	Combination - Back jets
Size - 60" x 32" x 20"	
1524 mm x 813 mm x 508 mm	

* Left or Right is determined by plumbing

PRODUCT FEATURES & BENEFITS

☐ Soaker

- Vacuum formed acrylic reinforced with fiberglass
- Scratch, stain and fade resistant high gloss finish
- Built in 1" tile flange on 3 sides
- Removable front access panel on all hydrotherapy models
- Above floor rough in
- Patterned bottom

☐ Whirlpool System

- 3/4 HP pre-wired self draining pump and motor factory installed on a platform base
- 6 adjustable flow whirlpool jets, 2 foot jets
- 5 spinner back jets included in model WB62
- Deck mounted air switch (A/S)

☒ Jet Air System

- 8.5 Amp variable speed blower on a platform base
- 18 air jets
- 5 air back jets included in model AB62
- Deck mounted electronic touch control pad with on/off, speed, and oscillation control (E/C)

☐ Combination

- Includes all the whirlpool + jet air features with 6 whirlpool jets, 16 air jets, 5 spinner back jets and 2 foot jets
- Deck mounted electronic touch control pad with on/off, (air and whirlpool), speed, and oscillation control (E/C)

☐ Optional Accessories

- Colour coordinated jets standard; polished chrome or brushed nickel available as an upgrade
- Factory installed whirlpool heater
- Door(s) - Refer to price book / website for coordinating shower door options

GENERAL SPECIFICATIONS

Average Weight	Soaker	70 lb	32 kg
	Whirlpool	109 lb	49 kg
	Jet Air®	81 lb	37 kg
	Combination	119 lb	54 kg
Bathing Well at bottom	22" x 45"	559 x 1143 mm	
Capacity Drain to Overflow	48 gall.	218 litres	
Min. operating capacity	40 gall.	182 litres	
Water Depth Drain to Overflow	12 5/8"	321 mm	
Drain Opening (dia.)	2"	51 mm	
Overflow Opening (dia.)	2 1/2"	64 mm	
Drain to Floor Clearance	3"	76 mm	

ELECTRICAL SPECIFICATIONS

Whirlpool pump / motor	3/4HP, 7.5 AMP, 120V
Jet air blower	8.5 AMP, 120V

Compliance Certifications -

Meets or Exceeds the following Specifications:

- CAN/CSA - B45 Series
- CAN/SCA - C22.2 No.218.2 - Hydromassage Standard



60 Shorncliffe Rd., Toronto, Ontario M8Z 5K1
Telephone: (416) 231-9030 - Fax: (416) 231-0929

Customer Service: (416) 231-5790
1-800-MIROLIN (647-6546)
Fax, Canada: 1-800-463-2236

84 018 / 41 518
08 Apr. 2015